

Blastin' Battle Boat



©2016 Aqua-Leisure® Industries, Inc. Contact: call 1-866-807-3998, send e-mail to customercare@aqualeisure.com, or mail to Aqua-Leisure Industries, P.O. Box 239, Avon, MA 02322-1098. Styles and colors may vary. Distributed by Aqua-Leisure Industries, Inc.

⚠️ PRODUCT WARNINGS and GUIDELINES: READ THIS INFORMATION CAREFULLY

To reduce the risk of injury or death, please follow these warnings and guidelines:

- This product is not a life-saving device. NEVER leave children unattended while in use.
- Use only under competent adult supervision.
- Adult is to instruct children on proper use of this product.
- For use by children ages 4-11. Not for children over the age of 12 or adults.
- Before use, remove all hard and sharp objects from children and their clothing.
- Only one child should be on the Boat at a time.
- DO NOT use this product if damaged. Check seams regularly for tears.
- Product is to be used ONLY ON WATER. DO NOT USE OR DRAG ACROSS ANY LAND SURFACE including driveways, yards, gravel, beaches, or shore line areas.
- Diving or jumping into water from this product is NOT RECOMMENDED.
- Store product in a secure place, away from children, to prevent suffocation.

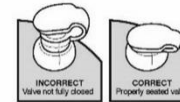
ASSEMBLY INSTRUCTIONS

- Inflate Blastin' Battle Boat until firm. DO NOT overinflate or use high-pressure air to inflate. For best results, finish inflating by mouth. Place valve cap firmly into the valve (see A).
- To attach Sprayer (see B), insert Feeder Tube into the front or back pocket hole on Boat, this tube guides the Sprayer into position. Insert the Sprayer's Flexible Tube into the Feeder Tube until the Sprayer is fully seated. Remove Feeder Tube once the Sprayer is in position.

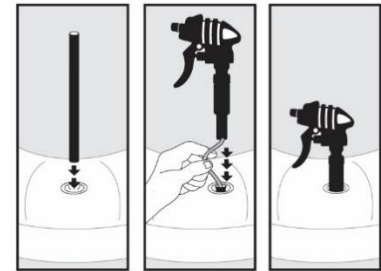
PRODUCT CARE

- Rinse products with clean water after use. Do not allow products to be exposed to direct sunlight for extended periods of time. Store in a cool, dry place.
- Vinyl plastic repair kit is enclosed.

A



B



WARRANTY

Return product to retailer with proof of purchase. Product is covered by a 30-day warranty from the original purchase date, under normal use, and against defective workmanship and materials.